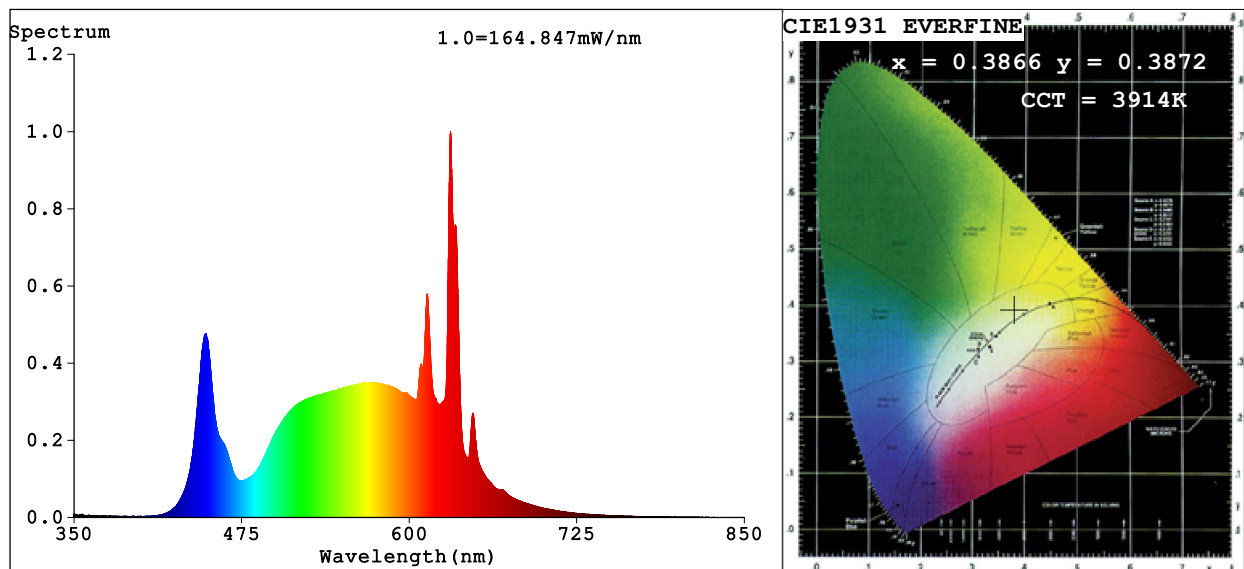


## Spectrum Test Report



### Color Parameters:

Chromaticity Coordinate:  $x=0.3866$   $y=0.3872$   $u'=0.2250$   $v'=0.5070$

CCT=3914K (Duv=0.0030) Dominant WL:Ld =577.9nm Purity=32.2%

Ratio:R=20.0% G=76.6% B=3.4%; Peak WL:Lp=630.9nm FWHM=8.3nm

Render Index:Ra=91.2 CRI=87.2 TM30:Rf=90 Rg=101

R1 =92 R2 =92 R3 =90 R4 =93 R5 =91 R6 =89 R7 =94

R8 =88 R9 =65 R10=79 R11=93 R12=69 R13=91 R14=94 R15=90

### Photo Parameters:

Flux = 3857 lm Eff. : 126.54 lm/W Fe = 11.42 W

### Electrical parameters:

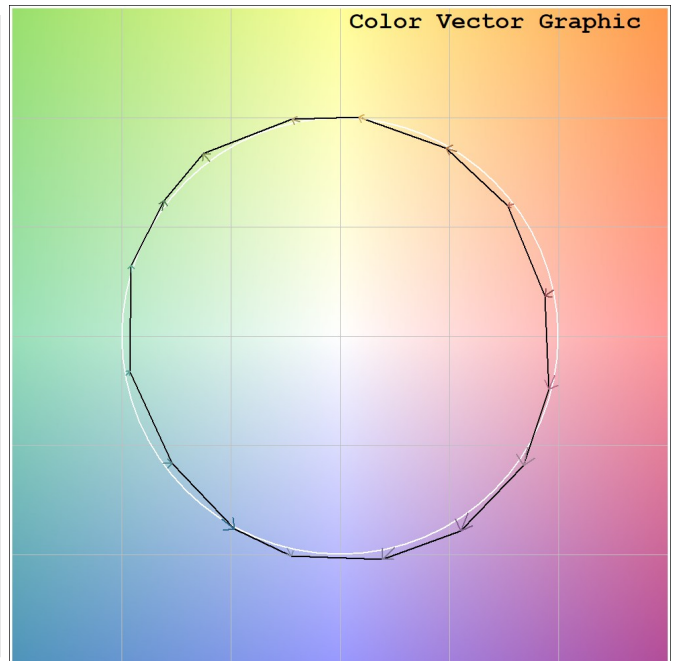
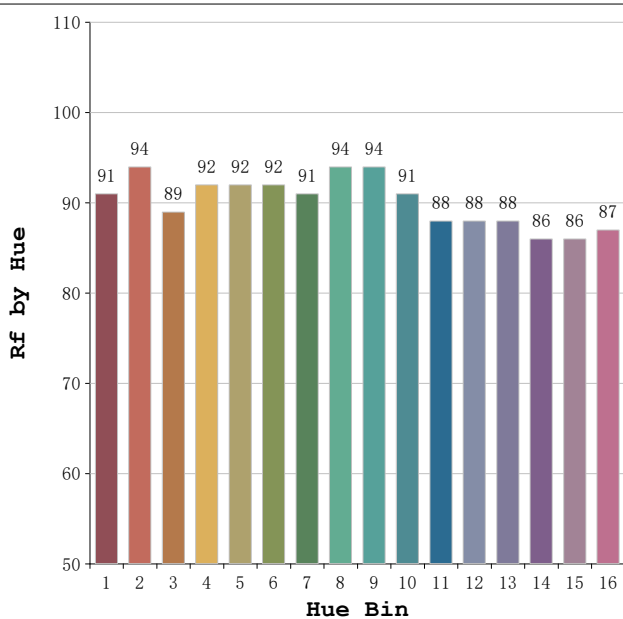
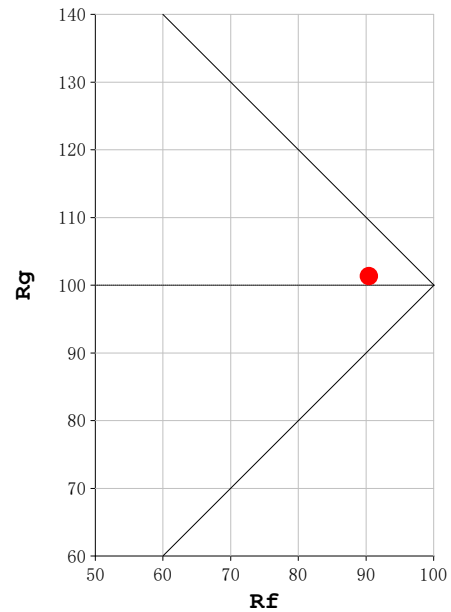
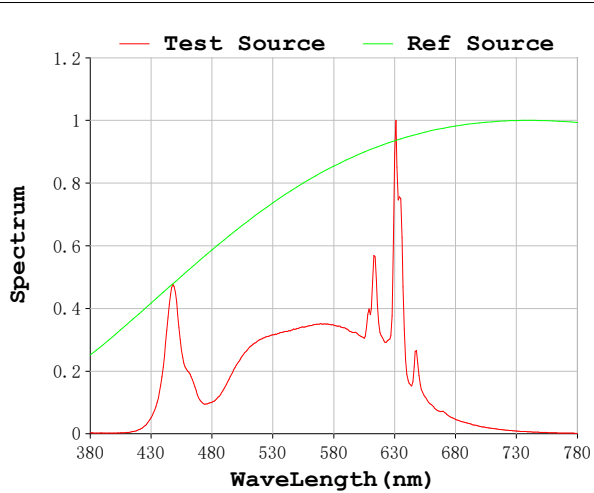
V = 230.05 V I = 0.1381 A P = 30.48 W PF = 0.9590

Status: Integral T = 195 ms Ip = 52350 (80%)

Model:Spotia 30w negro  
Tester:Sergio Carneros  
Temperature:20Deg  
Manufacturer:Luz Negra

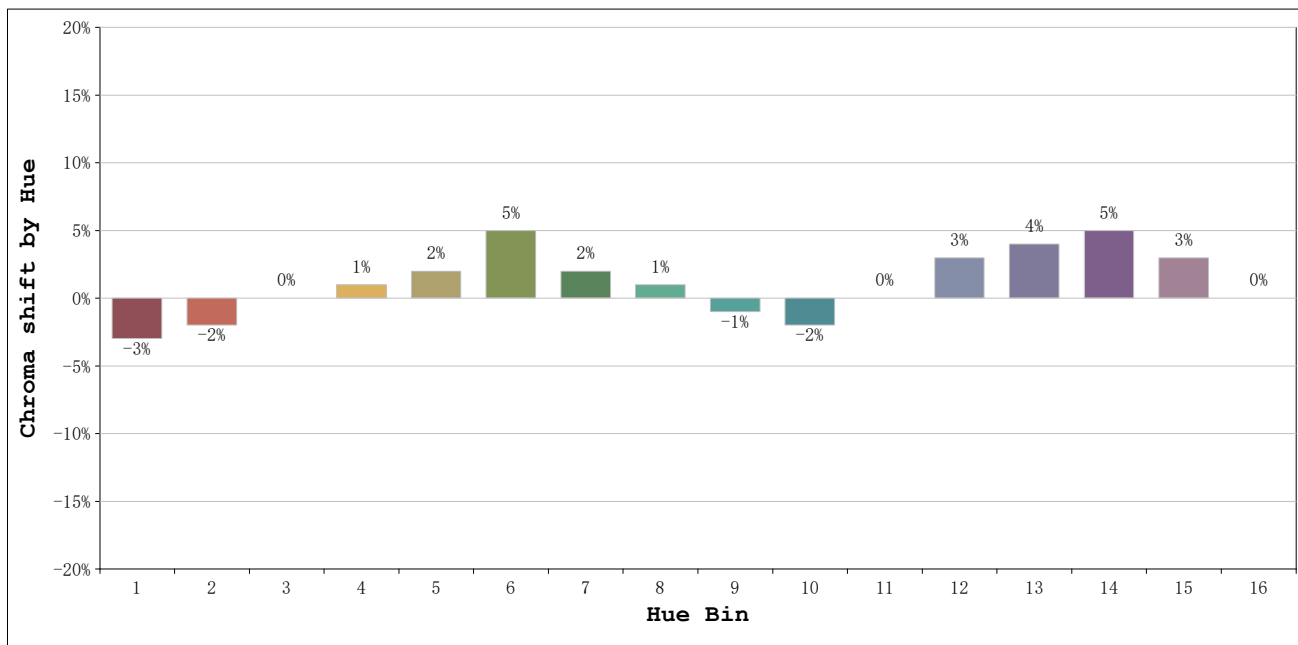
Number:4000k 36°  
Date:2026-03-23 09:59:01  
Humidity:50%  
Remarks:1 unidad

**Rf: 90**      **CCT: 3914 K**      **u': 0.2250**  
**Rg: 101**      **Duv: 0.0030**      **v': 0.5070**



Model:Spotia 30w negro  
 Tester:Sergio Carneros  
 Temperature:20Deg  
 Manufacturer:Luz Negra

Number:4000k 36°  
 Date:2026-03-23 09:59:01  
 Humidity:50%  
 Remarks:1 unidad



Hue Bin	Hue Angle	Rf	Graphic shift(%)	
			Chroma	Hue
1	0.0° - 22.5°	91	-3	-1
2	22.5° - 45.0°	94	-2	1
3	45.0° - 67.5°	89	0	5
4	67.5° - 90.0°	92	1	4
5	90.0° - 112.5°	92	2	3
6	112.5° - 135.0°	92	5	1
7	135.0° - 157.5°	91	2	-3
8	157.5° - 180.0°	94	1	-2
9	180.0° - 202.5°	94	-1	0
10	202.5° - 225.0°	91	-2	2
11	225.0° - 247.5°	88	0	7
12	247.5° - 270.0°	88	3	3
13	270.0° - 292.5°	88	4	-5
14	292.5° - 315.0°	86	5	-6
15	315.0° - 337.5°	86	3	-7
16	337.5° - 360.0°	87	0	-6

Model:Spotia 30w negro  
 Tester:Sergio Carneros  
 Temperature:20Deg  
 Manufacturer:Luz Negra

Number:4000k 36°  
 Date:2026-03-23 09:59:01  
 Humidity:50%  
 Remarks:1 unidad